



### 13 Yating Avenue Schofields NSW

5 2 4

Fall in love with the stunning kitchen which comes with stone bench tops, gas 5 burner stove and butlers pantry. The open plan living area opens out onto the low maintenance backyard and alfresco area.

#### Featuring

- Walk in robe and ensuite to master bedroom
- Built in robes to other bedrooms
- Bath tub to family bathroom
- Internal laundry with cupboard and bench space
- High ceiling
- Ducted air conditioning
- Security alarm
- Double lock up garage with internal access
- Located within walking distance to Schofields public school, transport, Rouse Hill town centre and much more.

**Land Size** : 466 sqm

**View** : <https://www.spgr.com.au/6108273>



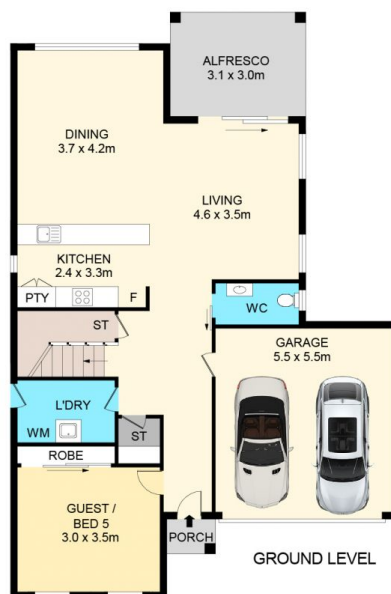
**Successful Properties**  
9688 2097



**Jing (celia) Xiao**  
9688 2097



SITE PLAN  
(NOT TO SCALE)



FIRST LEVEL

GROUND FLOOR (GARAGE/PORCH/ALFRESCO) :- 141 SQM  
FIRST FLOOR :- 76 SQM  
TOTAL :- 217 SQM

## 13 Yating Avenue, Schofields

### Disclaimer

Floor Plan measurements are approximate and are for illustrative purposes only. While we cannot doubt the floor plans accuracy, we make no guarantee, warranty or representation as to the accuracy and completeness of the floor plan

