



**19/8-10 Blenheim Avenue Rooty Hill NSW**

4 2 2

This nearly new townhouse is surrounded by quiet homes in one of Rooty Hill's most premier and convenient location. It is located within walking distance to schools (Australian Islamic College of Sydney), shops, Rooty Hill Train Station and Mount Drutt Station.

**Key Features include:**

- Ducted reverse cycle air conditioning
- Four generous sized bedrooms are equipped with built-in wardrobes
- Master bedroom with Ensuite
- Modern open plan Kitchen and Dining with gas cooking and ample storage
- Tiled flooring downstairs and laminate timber flooring upstairs
- Third toilet downstairs
- Internal laundry
- Security Alarm

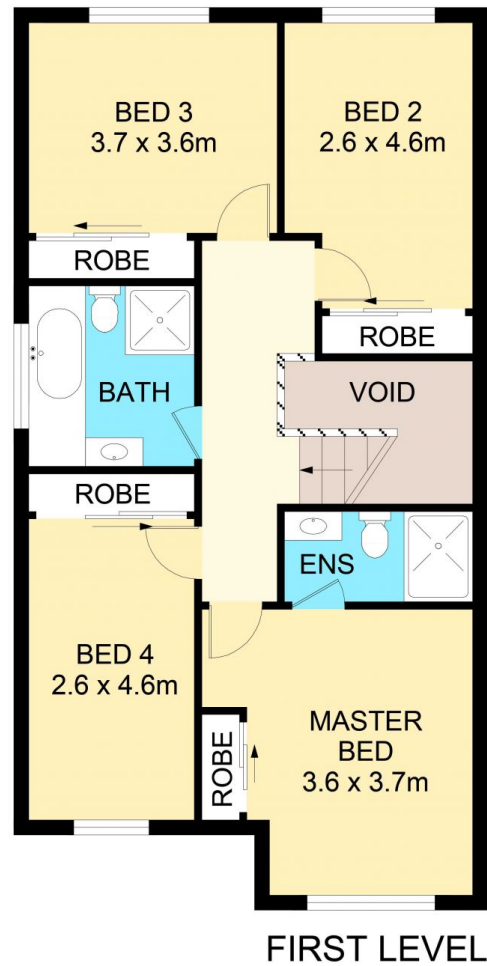
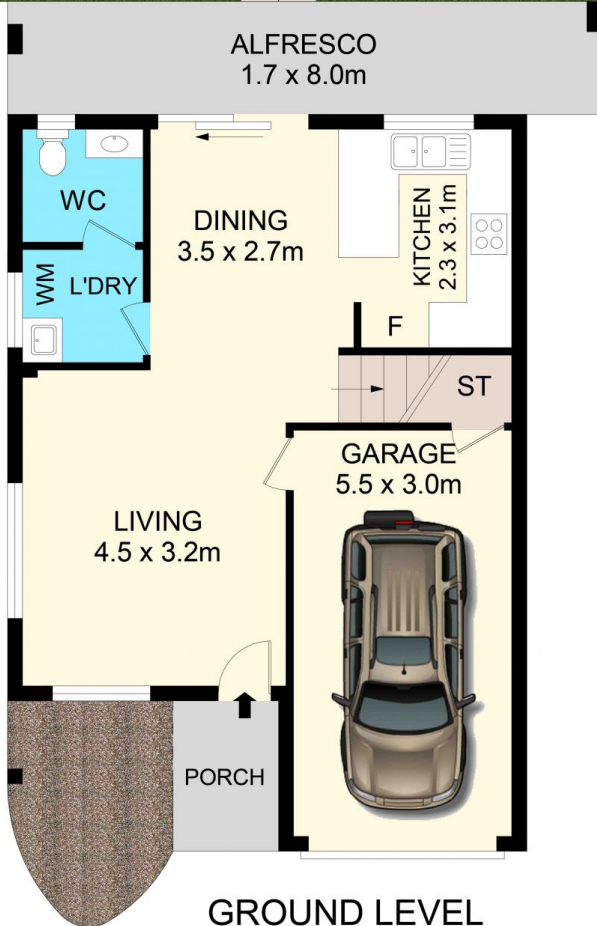
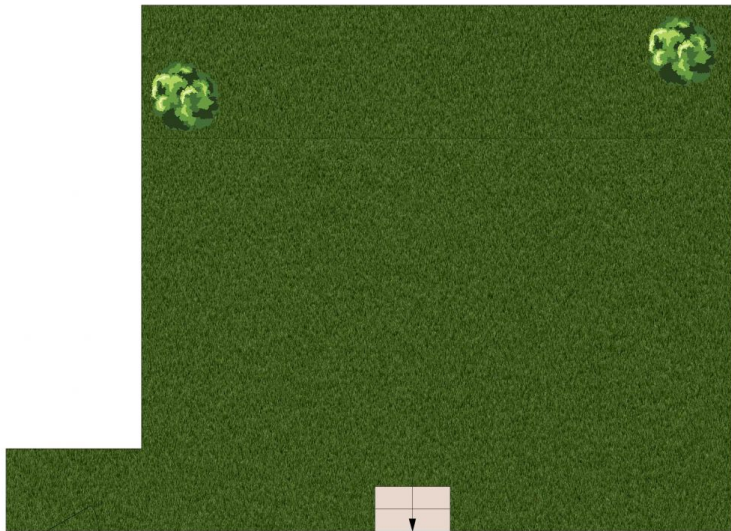
**View :** <https://www.spgr.com.au/6108343>



**Successful Properties**  
 9688 2097



**Feng (vic) Xiao**  
 9688 2097



## 19/12 Blenheim Avenue, Rooty Hill



**Disclaimer**

Floor Plan measurements are approximate and are for illustrative purposes only. While we cannot doubt the floor plans accuracy, we make no guarantee, warranty or representation as to the accuracy and completeness of the floor plan