



SPGR
成功地产
SUCCESSFUL PROPERTIES



48 Grima Street Schofields NSW

4 2 2

Beautiful four bedroom home in the heart of Schofields, within few minutes walk to train station and Woolworths supermarket.

View : <https://www.spgr.com.au/6108420>

Features include:

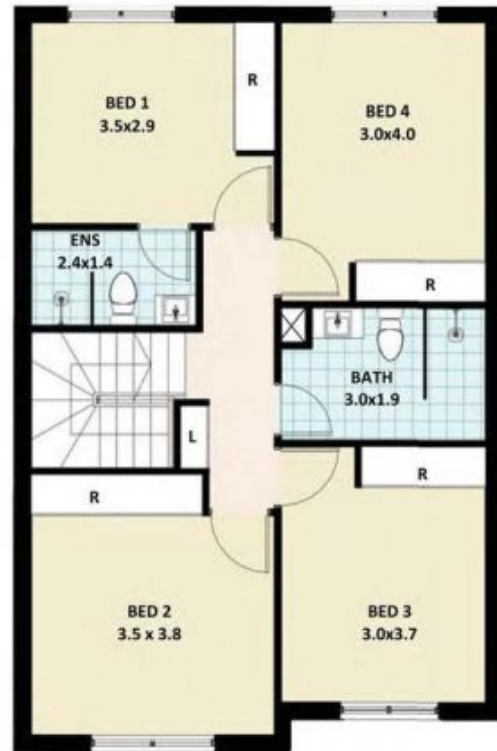
- Built-in robes with mirror finish to all bedrooms
- En-suite to main bedroom
- Quality laminated flooring to all bedrooms
- 2 contemporary bathrooms plus 3rd guest toilet downstairs
- Stone bench top & stainless steel appliances including dishwasher
- Gas cooking
- Polished floor tiles to living & kitchen zones
- Reverse cycle climate control for year-round comfort
- Gas hot water system



GROUND FLOOR PLAN



3D VIEW



FIRST FLOOR PLAN



Icon	Icon	Icon	Icon	GROUND FLOOR	FIRST FLOOR (INC BALCONY)	PORCH	BACKYARD (INC PATIO)	CAR SPACE	TOTAL AREA
4	2	1	1	75 m ²	76 m ²	2 m ²	51 m ²	13 m ²	217 m ²

Area quoted to be used as guide only. This plan is for illustration purposes only. All information contained is gathered from sources deemed to be reliable. We have no doubt it is accurate however we cannot guarantee it. Areas are subject to final survey. Layout may change due to final council approval. The marketing plan and strata plan area will vary because of the different methods of calculation adopted. The marketing plan area is based on gross floor area while the strata area is based on Strata Schemes (Final Development) Act 2015. Note: Showers, Rubbish, Linens, Bath, Bedside, Laundry, Bedside, & Kitchen panes, feature, some part of sales package. TV and other items such as credence, sofa, study desk, TV units & beds are not included as part of sale. Windows and doors sizes are indicative and subject to change based on legislative approval.



SITE PLAN

BURDEKIN ROAD