



14 Sonoran Glade Plumpton NSW

4 2 2

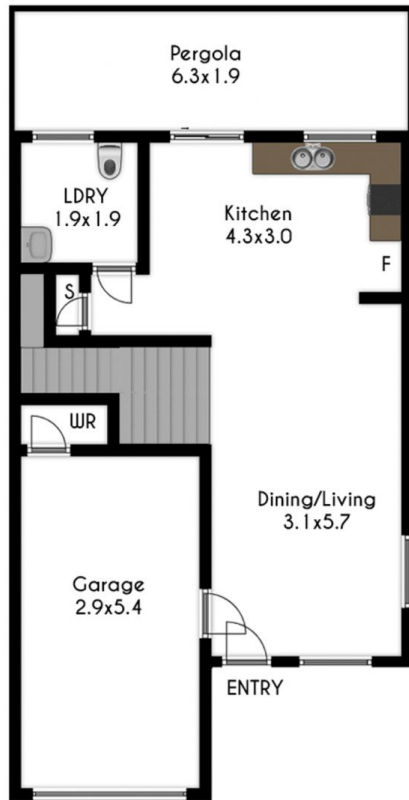
Feature packed freestanding 4 bedroom townhouse is located in a peaceful and friendly community. Only around 10 mins driving distance to Costco Marsden Park and business Park, 5 mins driving distance to Rooty Hill train station. Ideal for family who are after an affordable home in a private and convenient area and also the discerning investors.

Price : \$ 646,000

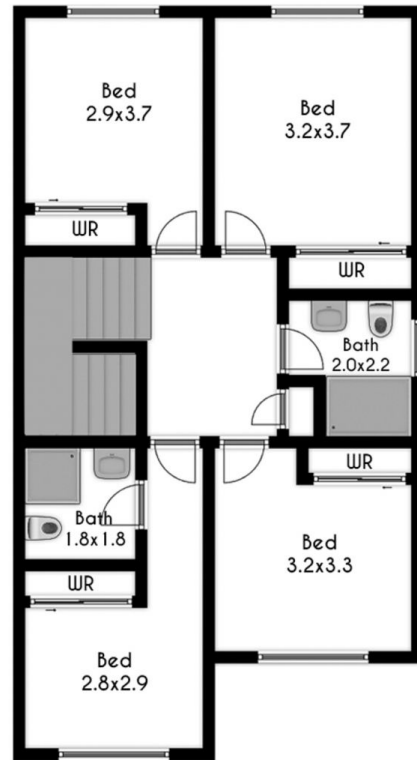
View : <https://www.spgr.com.au/6250249>

Features:

- 4 spacious bedrooms with mirror finish built-in robes
- Ensuite to the main bedroom
- Stone bench tops and gas cooktop
- Stainless steel kitchen appliances including dishwasher
- Polished floor tiles to living and kitchen area
- Gas hot water system, window furnishings, alarm system
- Single garage with automatic roller door plus one extra



GROUND FLOOR



FIRST FLOOR

DISCLAIMER: Whilst we deem this information to be reliable, we cannot guarantee its accuracy and accept no responsibility for such. Interested persons should rely on their own enquiries.