
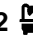





24 Parish Street Marsden Park NSW

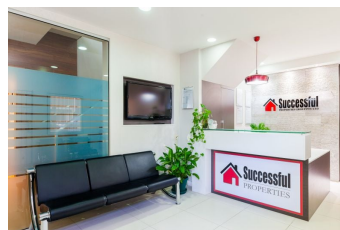
3  2  2 

Conveniently located in the heart of Elera Marsden Park, this rare find is just behind the new local shopping village which is under construction. This property offers family living design and quality inclusions built with high ceilings and functional floor plan.

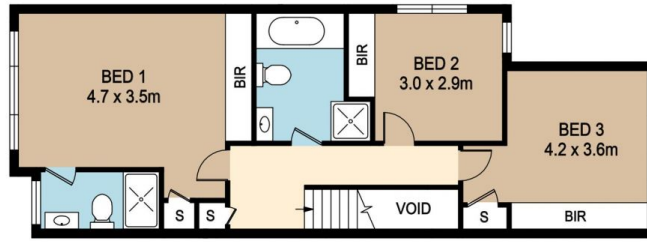
- Three generous sized bedrooms, master with ensuite.
- All Bedrooms include mirrored built-in robes with drawers, shelves and hanging rail
- Modern open plan kitchen with glass splash, 20 mm stone bench top, gas cook top, stainless steel appliances (Dishwasher/Oven) and overhead cupboards for extra storage.
- Internal laundry, study nook and powder room on the lower level.
- Separate lounge and family area

Price : \$ 795,000

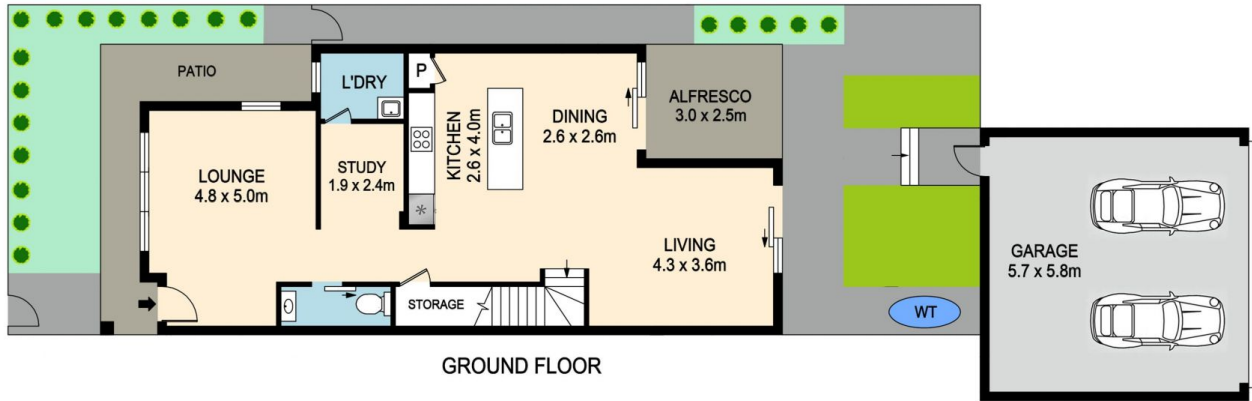
View : <https://www.spgr.com.au/6405800>



Successful Properties
9688 2097



FIRST FLOOR



GROUND FLOOR

24 PARISH STREET, MARSDEN PARK

DISCLAIMER: PLANS SHOWN ARE FOR MARKETING PURPOSES ONLY. ALL DIMENSIONS ARE APPROXIMATE AND NOT TO SCALE. THEY ARE SUBJECT TO ERRORS AND INACCURACIES AND NO LIABILITY WILL BE ACCEPTED. INTERESTED PARTIES SHOULD MAKE THEIR OWN INQUIRES.

