

52 Mountain Street The Ponds NSW

5 3 1

Please click "Contact Agent/Book An Inspection" to arrange private inspection for this property.

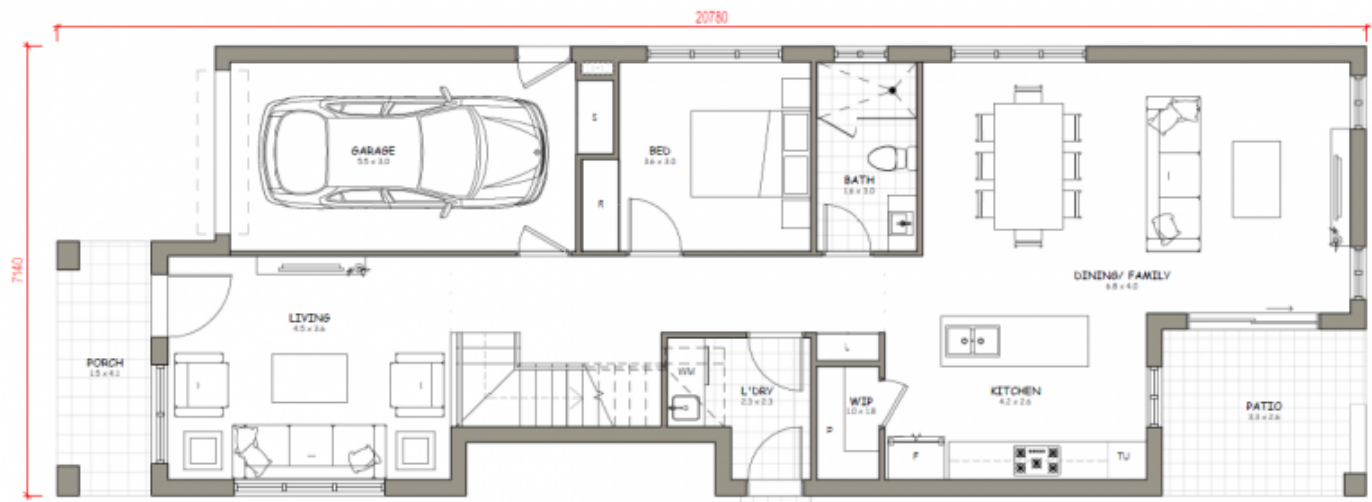
View : <https://www.spgr.com.au/6471661>

This beautiful double storey home offers clever family functionality with fabulous suburb appeal.

In catchment of The Ponds High School & Riverbank Primary School. Less than 10mins drive to Tallawong Station and 5 minutes away from Schofields Station.

This home offers:

- * Open plan living, dining and gas cooking kitchen
- * Modern kitchen with stone bench top & stainless steel appliances including dishwasher
- * Good size bedrooms, wooden laminate flooring with built-in mirrored robes
- * Ensuite to master bedroom



GROUND FLOOR PLAN



DISCLAIMER:
THIS DOCUMENT IS ONLY FOR ILLUSTRATIVE PURPOSE. ALL THE DIMENSIONS ARE APPROXIMATE AND IS SUBJECT TO CHANGE AS PER SITE CONDITIONS. ALSO IT DOES NOT CONSTITUTE PART OF ANY LEGAL DOCUMENTS. FURNITURE AND OTHER ELEMENTS SHOWN ARE ONLY FOR PRESENTATION PURPOSES. DRIVEWAY IS SUBJECT TO CHANGE AS PER ON-SITE SERVICES AND LEVELS. STEPS MAY BE ADDED IF ANY LEVEL ISSUES ON SITE. AREAS ARE INDICATIVE AND APPROXIMATE.

LOT PLAN



FIRST FLOOR PLAN