

## 58 Centennial Drive The Ponds NSW

4 4 4

Successful Properties Group is proudly to present this 4 bedroom double-storey house in the family friendly suburb, the Ponds. Centrally located and sun-drenched throughout, this spacious, modern design double storey house is ideal for growing family. Its premium setting is within walking distance to Tallawong Metro station, Piddington Street Playground, Riverbank Public School and the Ponds High School.

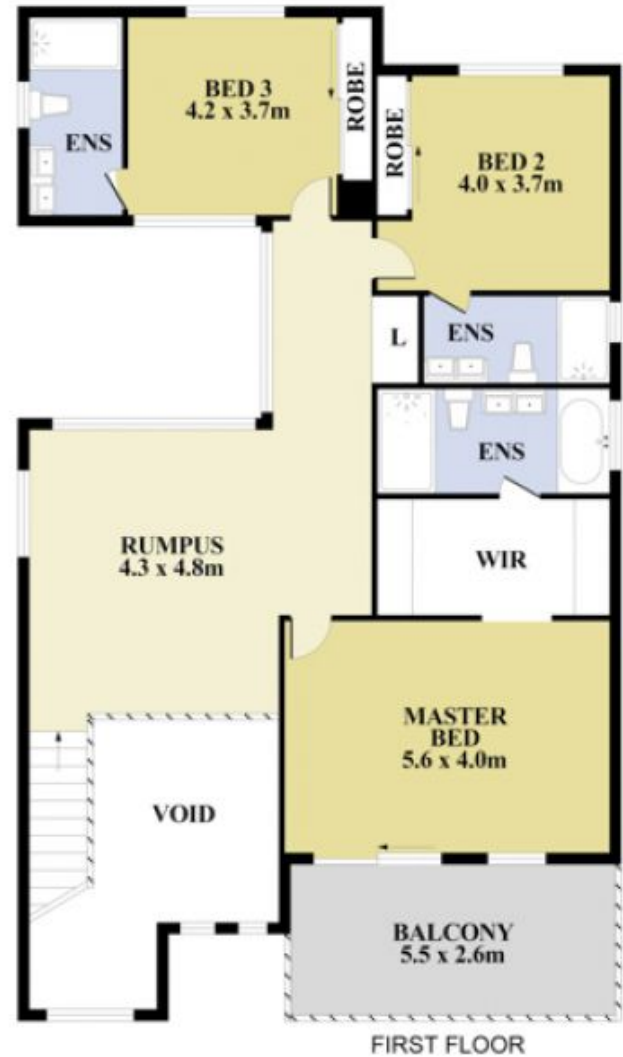
### Property Features:

- Total building area 390sqm (41.9sq) approx.
- High ceiling and sun-filled foyer
- Spacious formal living and dining area
- Open plan family, dining and kitchen area
- Two living areas with large windows and one rumpus upstairs
- Modern design kitchen with 40cm stone benchtop and

**Price** : \$ 1,630,000  
**Land Size** : 413 sqm  
**View** : <https://www.spgr.com.au/6574494>



**Donge (candy) Chen**



Floor Plan measurements are approximate and are for illustrative purposes only. While we cannot doubt the floor plans accuracy, we make no guarantee, warranty or representation as to the accuracy and completeness of the floor plan.

58 Centennial Drive, The Ponds