



510/11 Village Place Kirrawee NSW

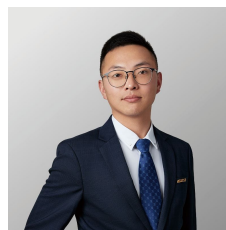
3 2 2

This incredible three-bedroom apartment is located on the top floor with a much sought after north-east aspect. Stunning views overlooking Botany Bay to the city skyline from two balconies. This corner apartment offers great natural sunlight and stylish interiors. Located within the vibrant "South Village" with popular restaurants, parks and excellent shopping facilities.

- Open plan light-filled living areas with a northeast aspect and timber flooring throughout
- Two good sized balconies with amazing city skyline over to the distant water views of Botany Bay
- Master bedroom with stylish ensuite and walk-in-robe
- Stunning kitchen offers stone benchtop, SMEG appliances and breakfast bar
- Additional room for storage next to the entry
- Ideally located within the vibrant South Village with easy access to transport including Kirrawee station

Price : \$ 1,090,000

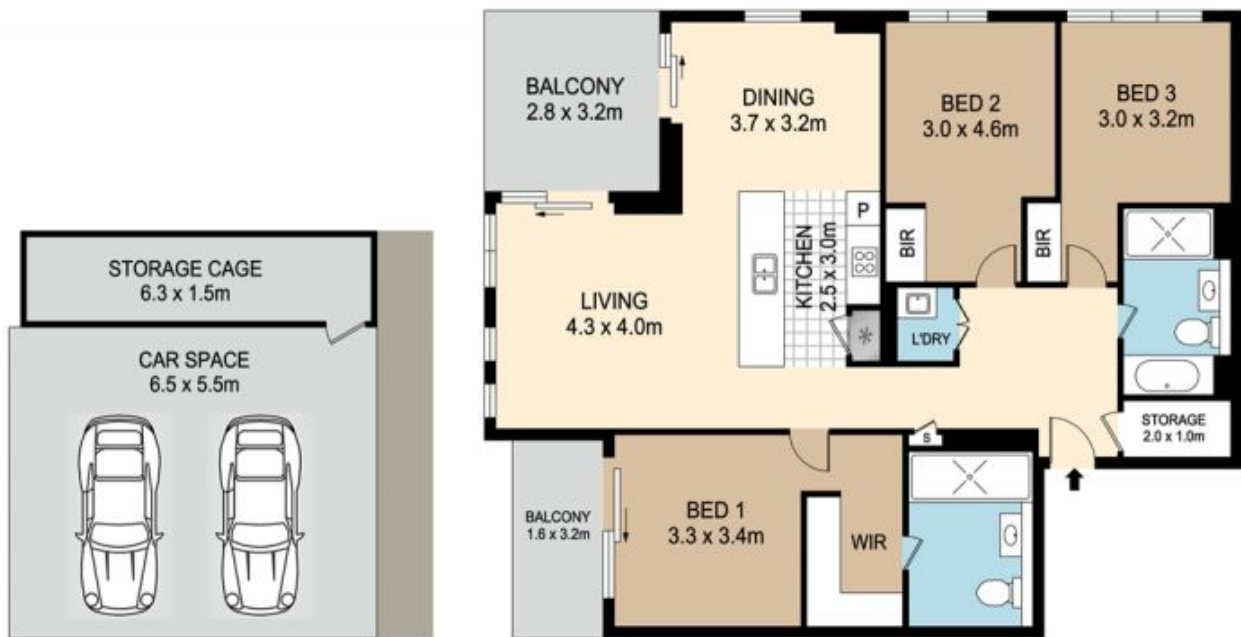
View : <https://www.spgr.com.au/7015218>



Yichao (simon) Yu
9688 2097



Successful Properties
9688 2097



510/11 VILLAGE PLACE, KIRRAWEE

DISCLAIMER : PLANS SHOWN ARE FOR MARKETING PURPOSES ONLY. ALL DIMENSIONS ARE APPROXIMATE AND NOT TO SCALE. THEY ARE SUBJECT TO ERRORS AND INACCURACIES AND NO LIABILITY WILL BE ACCEPTED. INTERESTED PARTIES SHOULD MAKE THEIR OWN INQUIRES.

