



**15/266 Pennant Hills Road Thornleigh NSW**

1  1  1 

Introducing a stunning opportunity to elevate your living experience in the heart of convenience and modern aesthetics! This apartment's doorstep is your gateway to ultimate convenience, with immediate access to Thornleigh train station, bus station and Thornleigh Marketplace. Experience comfort and tranquility in your spacious bedroom, designed for ultimate relaxation. Move-in ready, you can start enjoying your new space immediately.

**Price** : Offer Invited

**View** : <https://www.spgr.com.au/7709654>

**Features:**

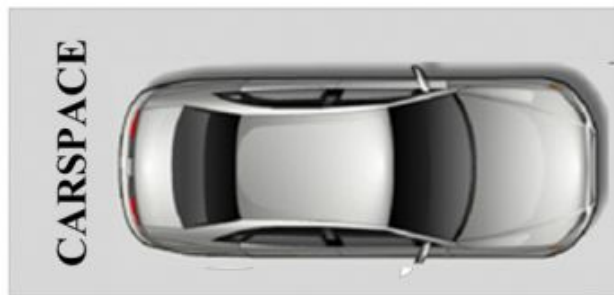
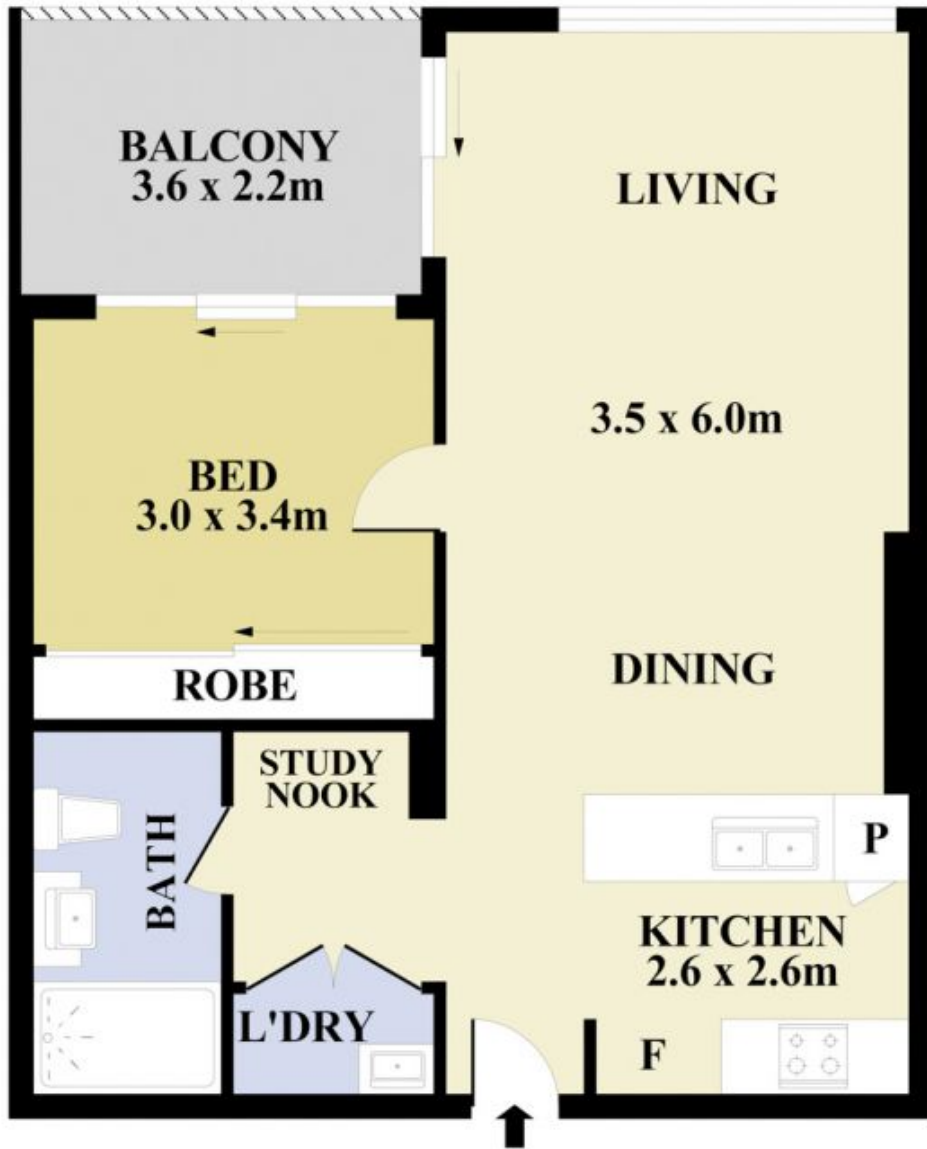
- Light-filled bedroom with build-in wardrobe and opens to an East facing balcony
- Nearly new quality kitchen with SMEG appliances, gas cooktop and splashback
- Spacious open plan living and dining area with a study nook
- Elegant bathroom and internal laundry
- Split air conditioning system, video intercom entry and



**Jing (celia) Xiao**  
9688 2097



**Successful Properties**  
9688 2097



Plans shown are for presentation purposes only and not part of any legal document or title. They are subject to errors, omissions, inaccuracies and should not be used as a sole and accurate reference interested parties should make their own inquiries using independent sources.



15/266-268 Pennant Hills Road, Thornleigh