
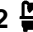





44 Price Ridge Leppington NSW

4  2  4 

Exclusively presented by SPGR, this remarkable corner block masterpiece epitomizes the pinnacle of double-story family living, flawlessly intertwining sophistication, opulence, and comfort. A true embodiment of elegance and functionality, this exceptional property seamlessly marries space, style, and convenience in a harmonious symphony!

Price : \$ 1,420,000
Land Size : 489 sqm
View : <https://www.spgr.com.au/sale/nsw/macarthurcamden/leppington/residential/house/7716256>

Strategically positioned to transcend beyond a mere living space, this residence offers a holistic lifestyle experience. Its prime location ensures effortless connectivity to various destinations, while the lush park and dynamic playground right at your doorstep extend a warm invitation to embrace the outdoors with absolute ease.

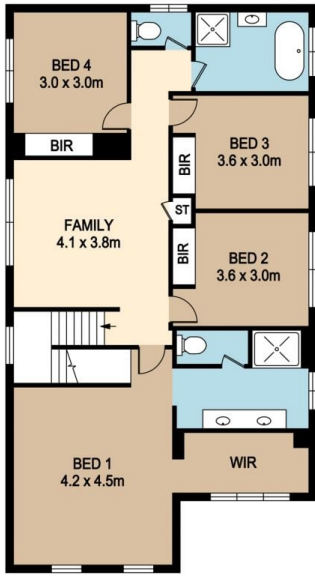
Upon entry, you are greeted by a charming tea room and a dedicated study area, setting the tone for refined living. The contemporary open kitchen takes center stage, boasting a lavish 40mm stone breakfast island and a well appointed



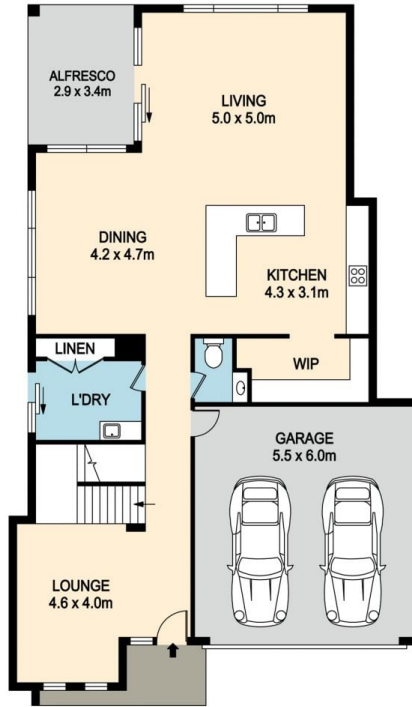
Yijing (cecilia) Wang
9688 2097



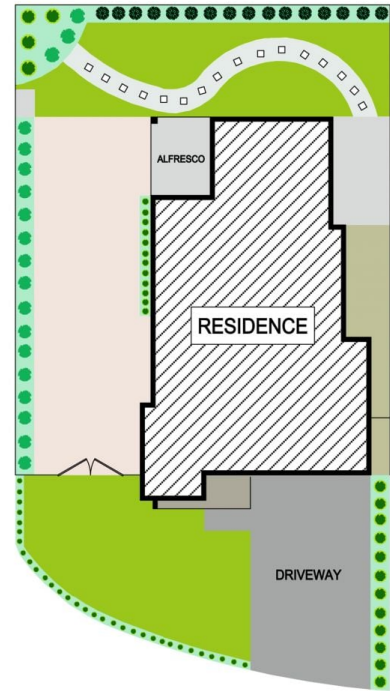
Yichao (simon) Yu
9688 2097



FIRST FLOOR



GROUND FLOOR



SITE PLAN

44 PRICE RIDGE, LEPPINGTON

DISCLAIMER : PLANS SHOWN ARE FOR MARKETING PURPOSES ONLY, ALL DIMENSIONS ARE APPROXIMATE AND NOT TO SCALE. THEY ARE SUBJECT TO ERRORS AND INACCURACIES AND NO LIABILITY WILL BE ACCEPTED. INTERESTED PARTIES SHOULD MAKE THEIR OWN INQUIRES.