



6/1-7 Hawkesbury Road Westmead NSW

2 2 2

Successful Properties Group is proud to present to you this wonderful family home in the perfect suburb, Westmead. Centrally located and sundrenched throughout, the spacious residence is truly impressive. This exceptional duplex offers a perfect blend of modern and comfortable living, and incredibly convenient home within short drive to local shopping centre, quality local schools and friendly parks, it will tick all the boxes you are looking for!

Key Features:

- Situated in the heart of Westmead, this duplex enjoys the convenience of being close to schools, parks, shops, and public transport.
- Two large sized bedrooms upstairs, each offering built-in wardrobes and plenty of natural light. The master bedroom with En-suite.
- Step inside to discover a spacious and light-filled interior

Price : \$ 1,000,000

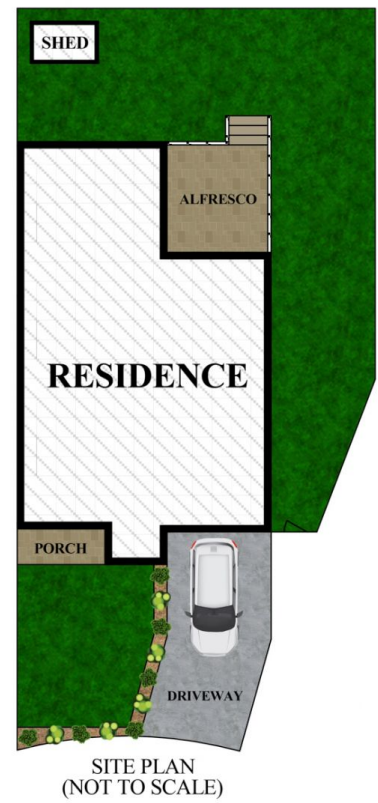
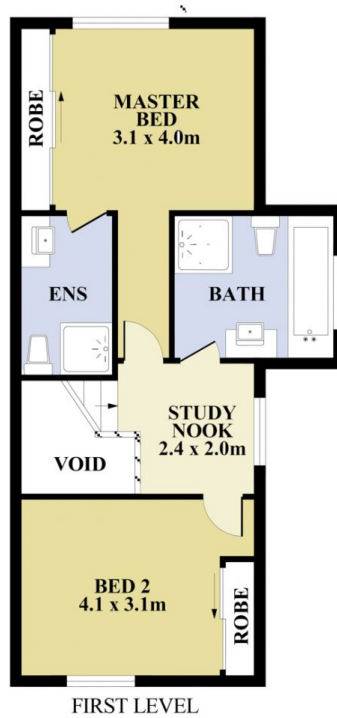
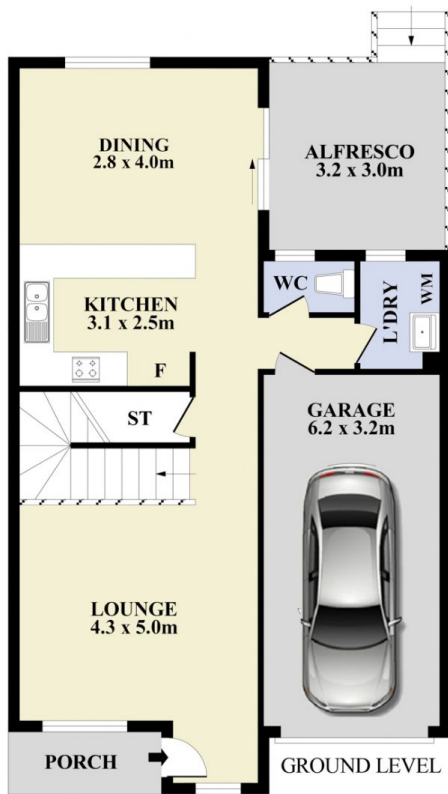
View : <https://www.spgr.com.au/7915455>



Wenzhuo (Alice) Wang
0432182273



Successful Properties
9688 2097



Plans shown are for presentation purposes only and not part of any legal document or title. They are subject to errors, omissions, inaccuracies and should not be used as a sole and accurate reference interested parties should make their own inquiries using independent sources.



U6/1-7 Hawkesbury Road, Westmead

