






5 McClelland Street Rouse Hill NSW

4  2  2 

5 McClelland Street, Rouse Hill is proudly presented by Ruby Sui of Successful Property Group.

Brand new construction home is located in the high side area of Tallawong Road. This stunning 4-bedroom, 2-bathroom house with double garage offers ample space for comfortable living. Full turnkey package including landscaping is delivered by one of Australia's premier construction and design teams.

- Wide entry and hallway, build storage next study nook
- Separately formal lounge room, used as guest room
- Upgraded kitchen with walk-in pantry, 20mm Caesarstone kitchen benchtop
- 4 spacious bedrooms with rumpus upstairs
- Extra-large Master bedroom with 2 walk-in wardrobes for hers and his
- Hybrid timber flooring to main living area, all bedrooms,

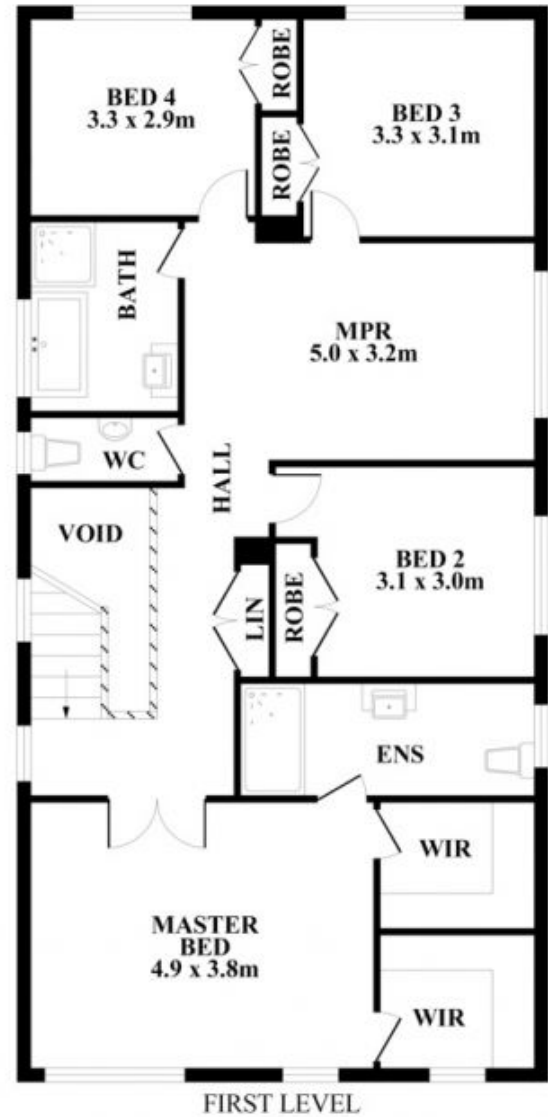
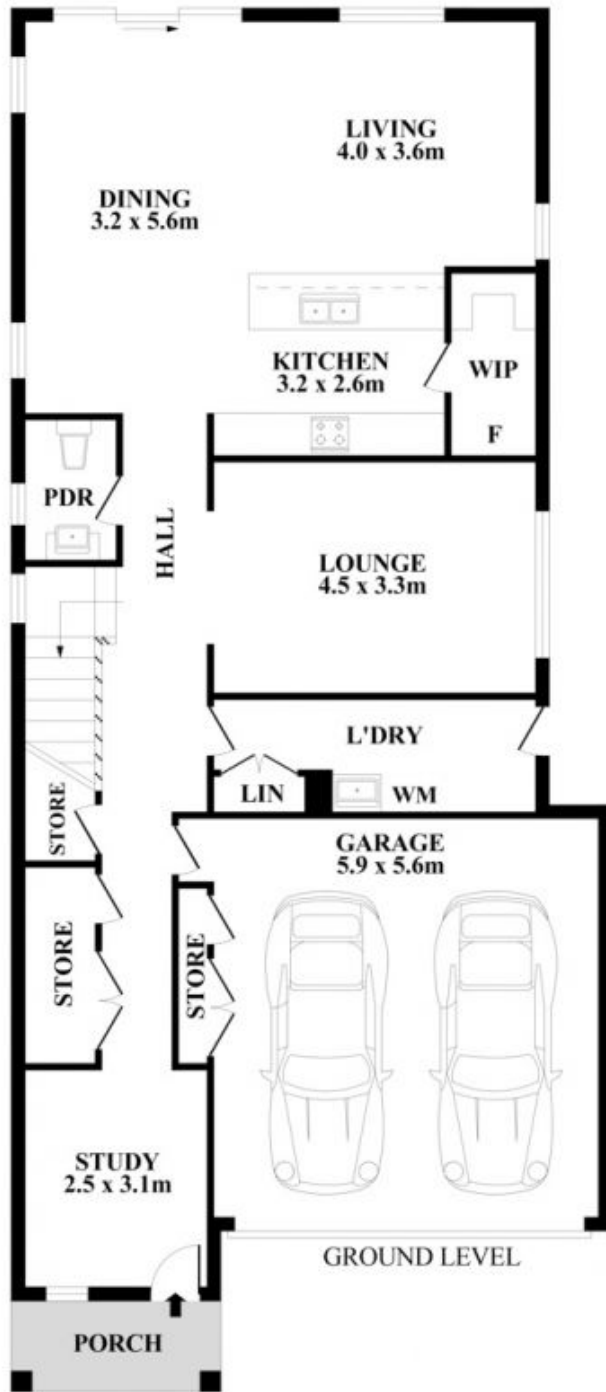
Price : Contact Agent
View : <https://www.spgr.com.au/7930945>



Fanfan (ruby) Sui
9688 2097



Jinping (emma) Zhang
9688 2097



Plans shown are for presentation purposes only and not part of any legal document or title. They are subject to errors, omissions, inaccuracies and should not be used as a sole and accurate reference interested parties should make their own inquiries using independent sources.



5 McClelland Street, Rouse Hill