
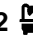





49 Cobden Parkes Crescent Lidcombe NSW

3  2  2 

Successful Properties Group is proud to present to you a lovely 3 bedroom home in the beautiful suburb of Botanica Estate, Lidcombe. This stunning residence boasting a perfect blend of modern comfort and classic charm, it offers a lifestyle of convenience and tranquility. Nestled in a peaceful neighborhood, the house is the perfect place to call home. It is ideal for all young families, first home buyers and the investors.

Features:

- 3 spacious bedrooms all with built-in wardrobes
- Split air-conditioning living area and each bedroom
- Timber flooring board throughout ground floor and first level
- Bright and airy open-plan living and dining area
- Modern kitchen with quality appliances and ample storage
- Stylish bathroom with separate bath and shower, master

Price : \$ 1,270,000

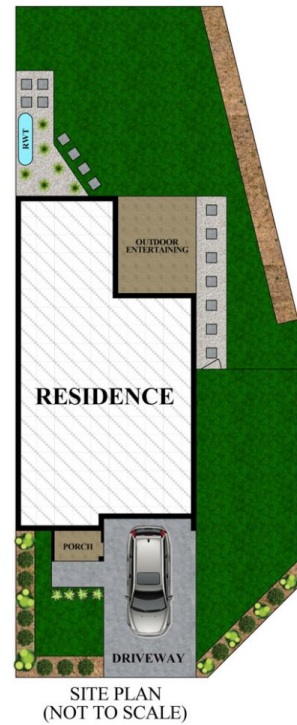
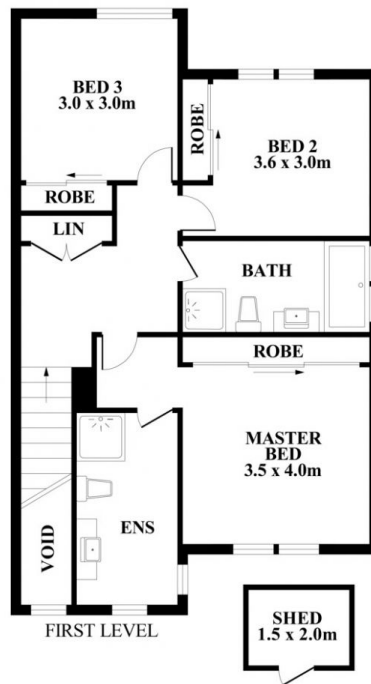
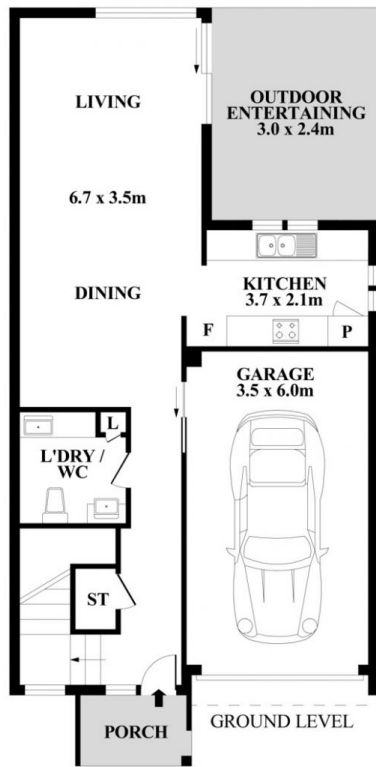
View : <https://www.spgr.com.au/7934574>



Wenzhuo (alice) Wang
0432182273



Yichao (simon) Yu
9688 2097



Plans shown are for presentation purposes only and not part of any legal document or title. They are subject to errors, omissions, inaccuracies and should not be used as a sole and accurate reference interested parties should make their own inquiries using independent sources.



49 Cobden Parkes Crescent, Lidcombe

