



242/5 Stovemaker Lane Erskineville NSW

1  1 

Please search 218 Mitchell Rd, Alexandria for GPS and Stovemaker Ln located opposite of this address.

Price : \$ 882,000
View : <https://www.spgr.com.au/7955042>

Nestled in a quiet, convenient and peaceful location, this bright 1 bedroom + study apartment offers a blend of comfort and functionality. The expansive balcony boasts leafy views and ample sunlight access to the beautiful roof garden.

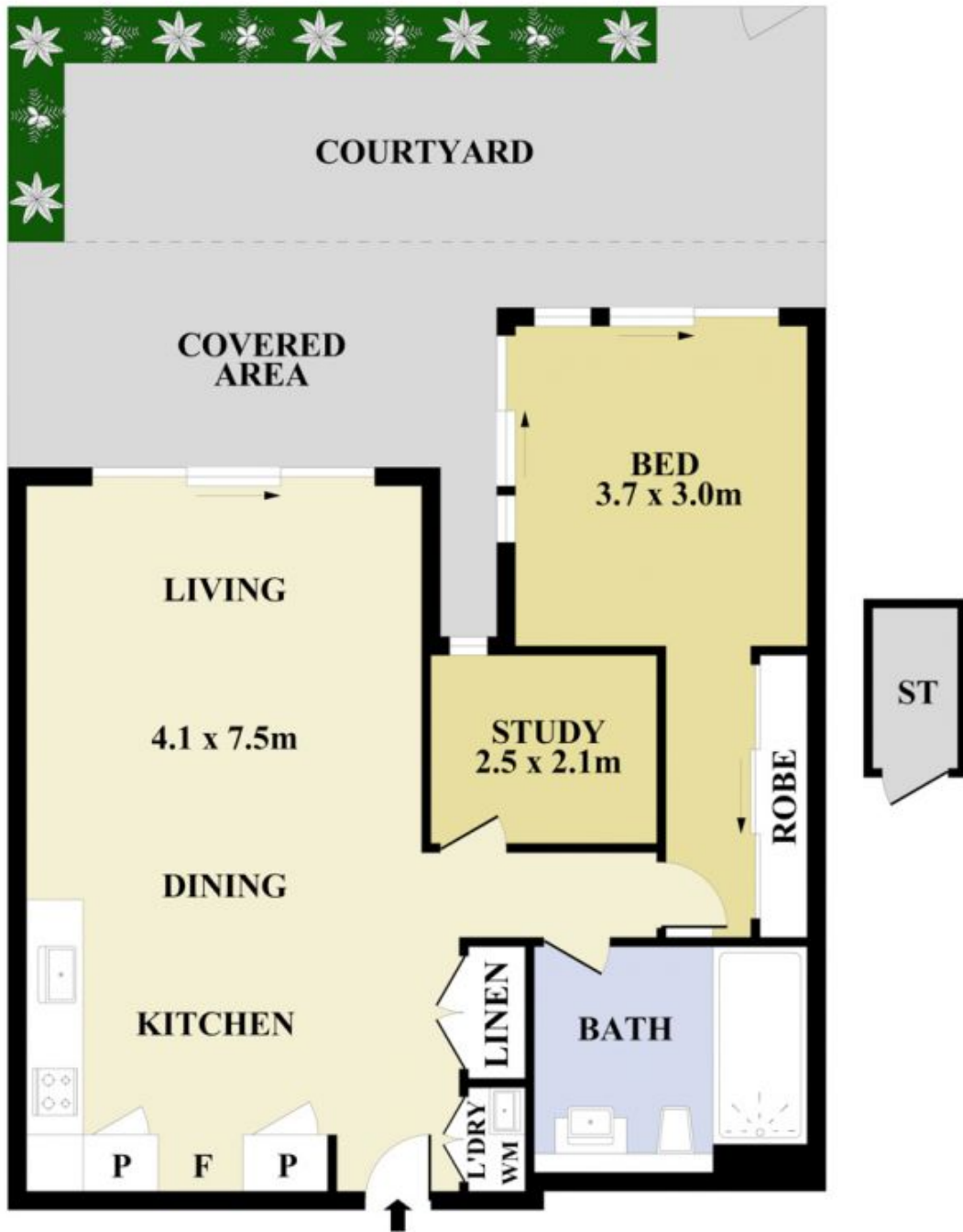
The open plan living and dining area seamlessly extends to the balcony, perfect for entertaining. The modern kitchen features elegant stone benchtops, top-of the-line Smeg appliances, gas cooking top and many tall large pantry cabinets. The bedroom is a cozy retreat with generous built-in wardrobes. A large individual study room is also provided, perfect for a spare bedroom or home office, ideal for those who work remotely. Stylish and spacious fully tiled bathroom. This rare apartment is sure to impress first home



Fanfan (ruby) Sui
9688 2097



Successful Properties
9688 2097



Plans shown are for presentation purposes only and not part of any legal document or title. They are subject to errors, omissions, inaccuracies and should not be used as a sole and accurate reference interested parties should make their own inquiries using independent sources.



242/5 Stovemaker Lane, Erskineville