



311/3 George Street Warwick Farm NSW

2 🛏 2 🚿 1 🚗

Successful Properties Group is proud to present to you this bright and spacious modern 2-bedroom apartment located in the heart of Liverpool growing CBD. It offers you a lifestyle living with space and convenience. Ideal for all young families, first home buyers, investors, and those who are looking for downsize property.

Price : Under Contract
View : <https://www.spgr.com.au/7955074>

Situated within a short walk of Westfield Shopping Centre, Warwick Farm station, restaurants and other amenities ensure that lifestyle is a major benefit of this great apartment.

Features:

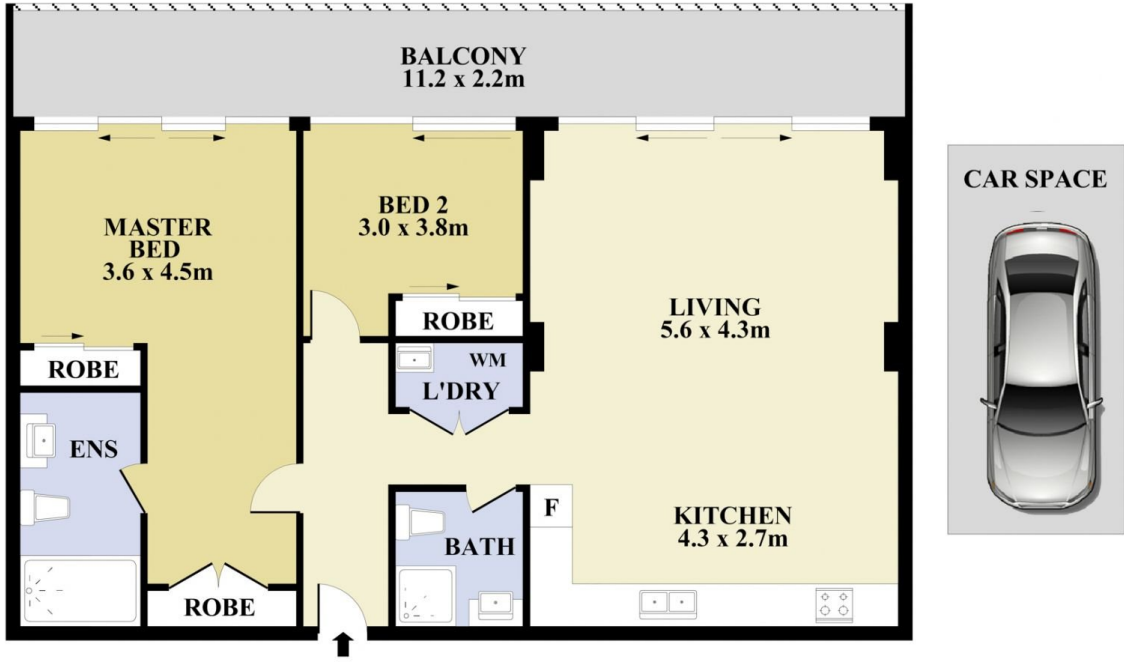
- Built in wardrobes to all two good sized bedrooms
- Master bedroom with En-suite and spacious second common bathroom
- Open designed kitchen with gas cooktop, oven,



Fanfan (ruby) Sui
9688 2097



Successful Properties
9688 2097



Plans shown are for presentation purposes only and not part of any legal document or title. They are subject to errors, omissions, inaccuracies and should not be used as a sole and accurate reference interested parties should make their own inquiries using independent sources.



311/3 George Street, Warwick Farm