




10/12 Blenheim Avenue Rooty Hill NSW

4  2  2 

Successful Properties Group is proud to present to you this stunning spacious double storey 4-Bedroom Townhouse in Rooty Hill's Finest Locale. Discover the epitome of modern living in this beautiful property nestled in the heart of suburb. Located at 10/12 Blenheim Ave, this contemporary residence offers a perfect blend of comfort, style, and convenience. The garages and plenty of storage spaces offer a quality lifestyle and a great place to raise a family, ticking all boxes.

Price : \$ 800,000

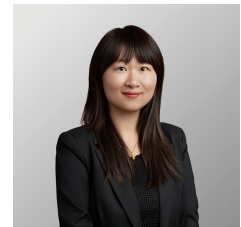
View : <https://www.spgr.com.au/sale/nsw/western-sydney/rooty-hill/residential/townhouse/8172666>

Key Features:

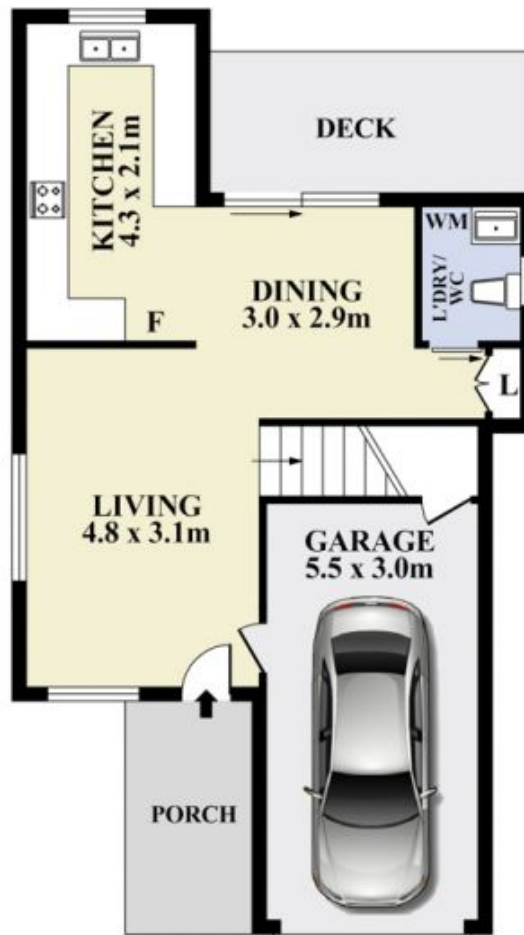
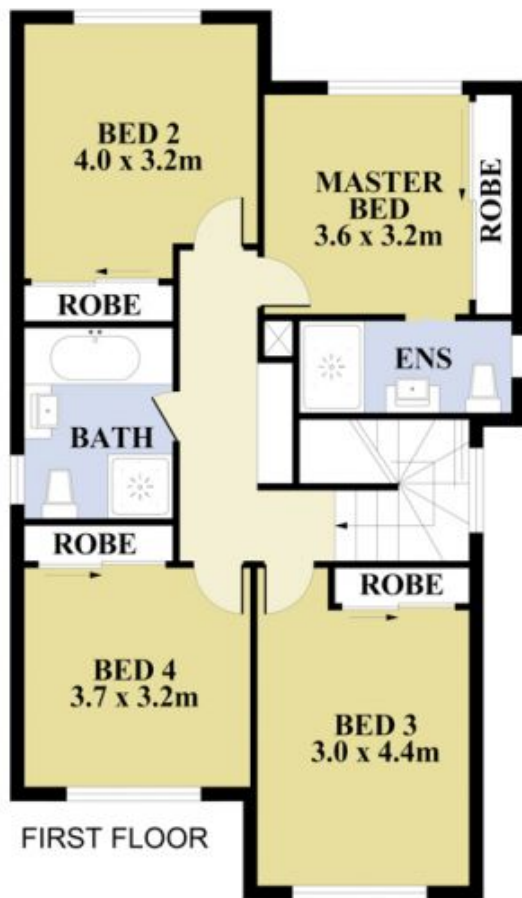
- Generous Living Space: Spread across two levels, this townhouse boasts ample living space, perfect for families seeking room to grow and entertain.
- Four Bedrooms: Enjoy the luxury of four well-appointed bedrooms, offering privacy and comfort for every member of the family.
- Modern Kitchen: The sleek kitchen is equipped with



Feng (vic) Xiao
9688 2097



Wenzhuo (alice) Wang
0432182273



Plans shown are for presentation purposes only and not part of any legal document or title. They are subject to errors, omissions, inaccuracies and should not be used as a sole and accurate reference interested parties should make their own inquiries using independent sources.



10/12 Blenheim Avenue, Rooty Hill