
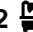





### 7 Sawle Glade Marsden Park NSW

3  2  1 

Jolin Wang from SPGR proudly presents 7 Sawle Glade, Marsden Park - a delightful and contemporary 3-bedroom townhouse designed for comfort, convenience, and a family-friendly lifestyle. Perfectly located, this residence is just a short drive to Elara Village and Marsden Park Business Hub. Whether you're a first-home buyer, a young couple, or an investor seeking a low-maintenance property with high rental returns, this home ticks all the boxes.

**Price** : \$ 835,000

**View** : <https://www.spgr.com.au/sale/nsw/western-sydney/marsden-park/residential/townhouse/8237361>

#### Property Features:

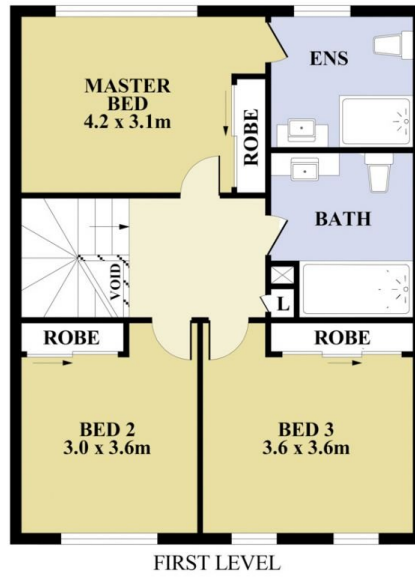
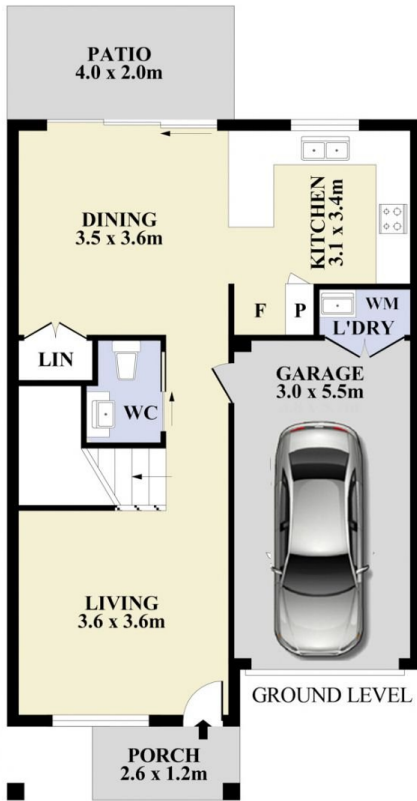
- ? Spacious open-plan living, dining, and kitchen areas with elegant wooden laminate flooring throughout.
- ? Gourmet kitchen with 400mm stone benchtop, gas cooking, and premium stainless-steel appliances.
- ? Three generously sized bedrooms with built-in mirrored wardrobes.
- ? Master bedroom with a private ensuite.
- ? Two stylish bathrooms with floor-to-ceiling tiles, plus a



**Qiuling (jolin) Wang**  
9688 2097



**Successful Properties**  
9688 2097



Plans shown are for presentation purposes only and not part of any legal document or title. They are subject to errors, omissions, inaccuracies and should not be used as a sole and accurate reference interested parties should make their own inquiries using independent sources.



7 Sawle Glade, Marsden Park