



27 Waring Crescent Plumpton NSW

5 🛏 3 🚿 2 🚗

Welcome to your future dream home! This stunning 5-bedroom townhouse offers unparalleled comfort and style in a sought-after neighbourhood of Plumpton. With its five generously sized bedrooms, three baths, and a convenient one-car garage, this home provides ample space for everyone to enjoy.

Conveniently located in a prime position, this residence is in close proximity to schools, nearby train stations, amenities, and easy access to the motorway ensures that your daily commute and day-to-day activities are hassle-free.

Don't miss the opportunity to own this Meticulously maintained Townhouse ready for you to call it home! Contact us today to schedule your private showing!

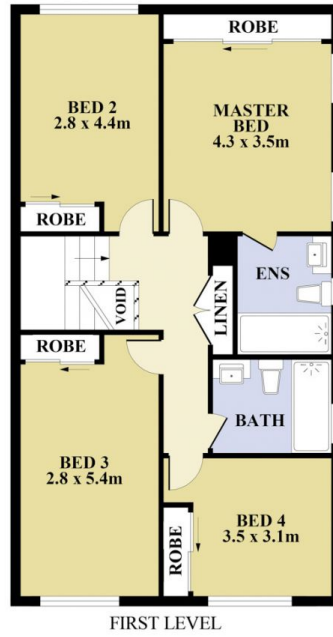
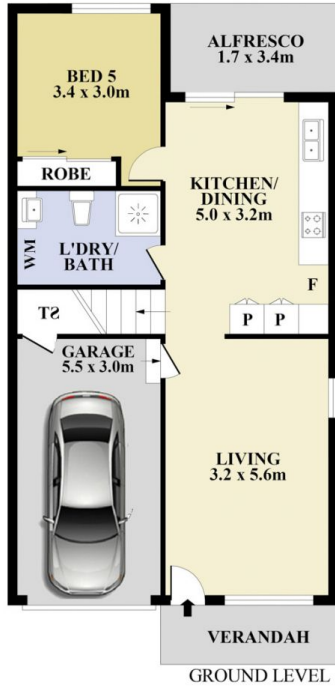
Price : Contact Agent

View : <https://www.spgr.com.au/sale/nsw/western-sydney/plumpton/residential/townhouse/8682430>



Fanfan (ruby) Sui
9688 2097

Property Features:



Plans shown are for presentation purposes only and not part of any legal document or title. They are subject to errors, omissions, inaccuracies and should not be used as a sole and accurate reference interested parties should make their own inquiries using independent sources.

27 Waring Crescent, Plumpton

