



3 Storm Place MARSDEN PARK NSW

5 🛏 3 🚗 2 🚗

Positioned in a quiet pocket of Marsden Park, this stunning five-bedroom residence offers a harmonious blend of luxury and functionality. Upon entry, you are greeted by an inviting ambiance that flows seamlessly throughout the living and dining area onto the alfresco. With five airy and sun-filled bedrooms, master with parent's retreats, Open-plan living area, and added features of EV charger and solar panels, this contemporary home has all a family can ask for.

Price : \$ 1,100 per week

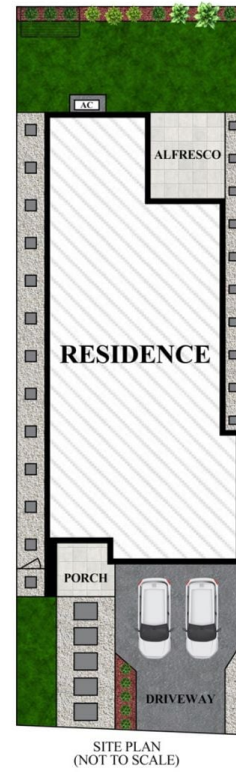
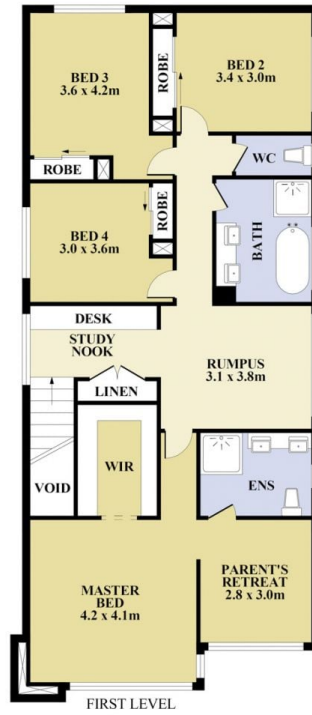
View : <https://www.spgr.com.au/lease/nsw/western-sydney/marsden-park/residential/house/8692379>

Features We Love:

- Five spacious bedrooms with built-ins
- Airy master bedroom with walk-in, ensuite and a parent's retreat / nursery, also great for a quiet home office or study
- A separate bedroom and bathroom downstairs, perfect for the elderly
- Modern Kitchen with stone bench top, gas cooking and quality appliances
- Multiple living zones, including a media room downstairs,



Qiuling (Jolin) Wang



Plans shown are for presentation purposes only and not part of any legal document or title. They are subject to errors, omissions, inaccuracies and should not be used as a sole and accurate reference interested parties should make their own inquiries using independent sources.



3 Storm Place, Marsden Park